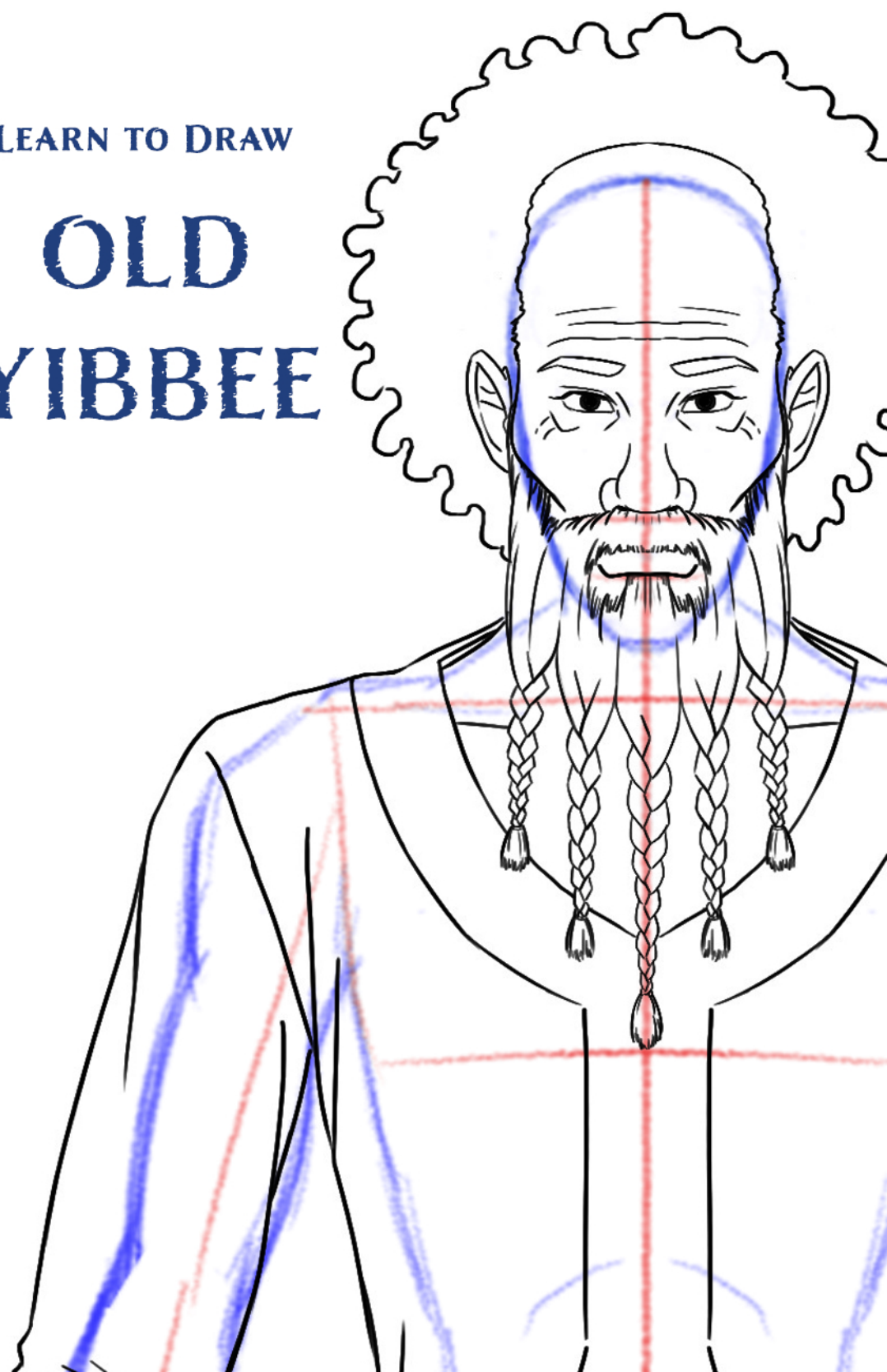


LEARN TO DRAW

# OLD YIBBEE



# 1

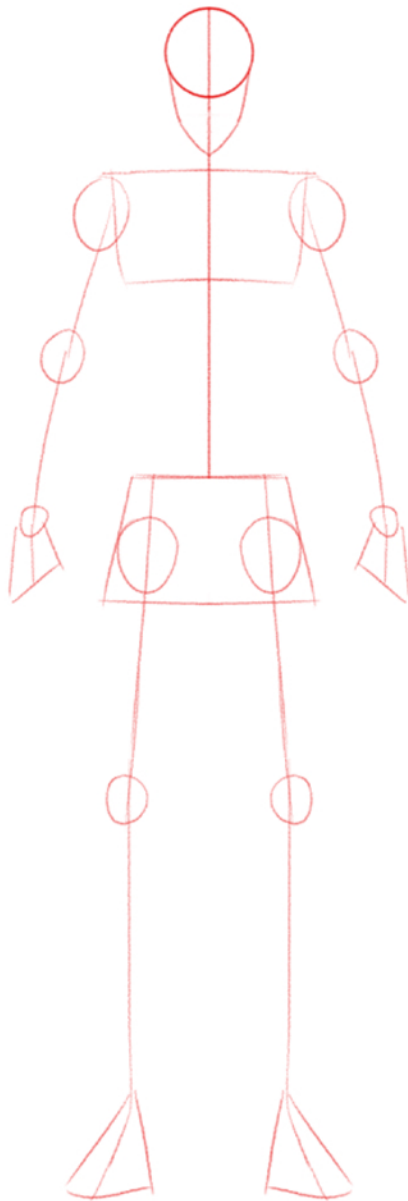
**TO BEGIN YOUR DRAWING, YOU  
WILL FIRST DRAW A STICK FIGURE AS A GUIDE  
FOR THE BODY. THE SKELETON IS WHAT YOU'LL  
USE TO START DEVELOPING YOUR DRAWING.**

**DRAW YOUR GUIDELINES LIGHTLY SO  
THEY CAN BE ERASED.**



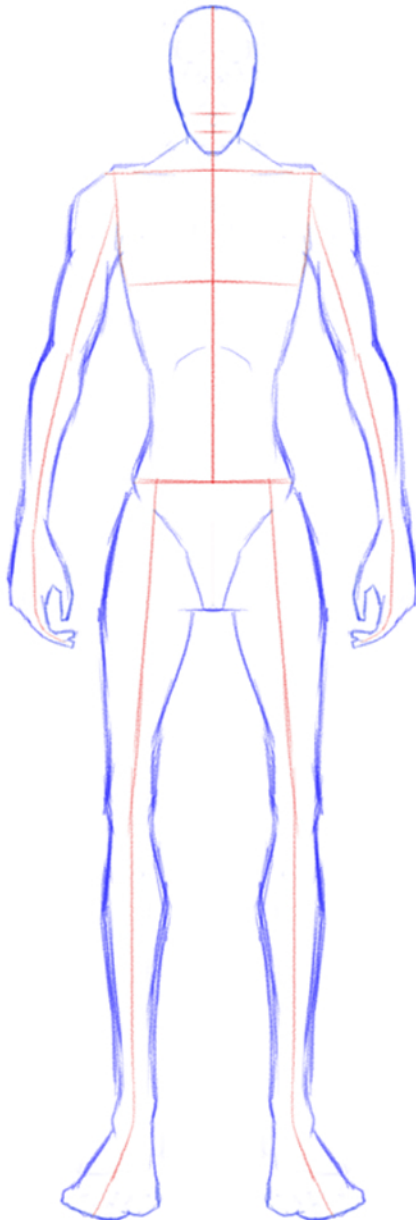
## 2

**NEXT, DRAW CIRCLES FOR THE HEAD, SHOULDERS, AND JOINTS OF THE ARMS AND LEGS. YOU WILL USE THESE CIRCLES AS GUIDES WHEN CREATING THE BODY SHAPE.**



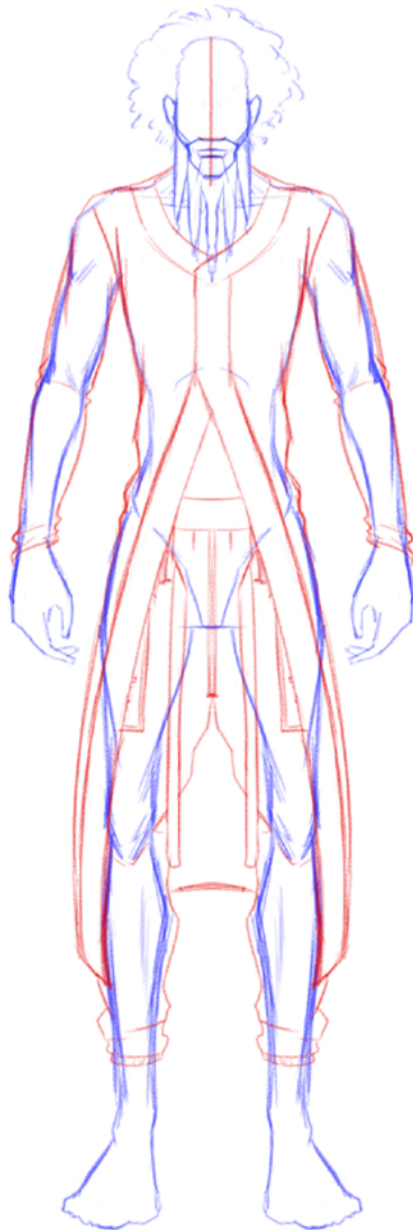
# 3

**NOW, LET'S DRAW THE BODY. USE NICE SMOOTH LINES FOR THE BODY. DON'T FORGET TO USE YOUR GUIDES. YOU CAN ERASE YOUR CIRCLE GUIDES.**



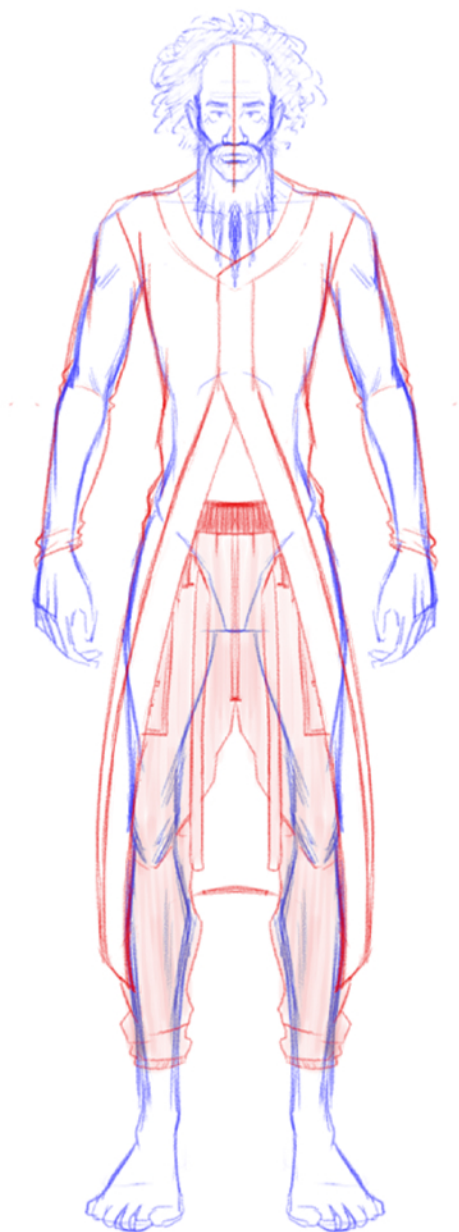
# 4

**NOW LET'S ADD THE FUN STUFF.  
HAIR AND CLOTHING.**



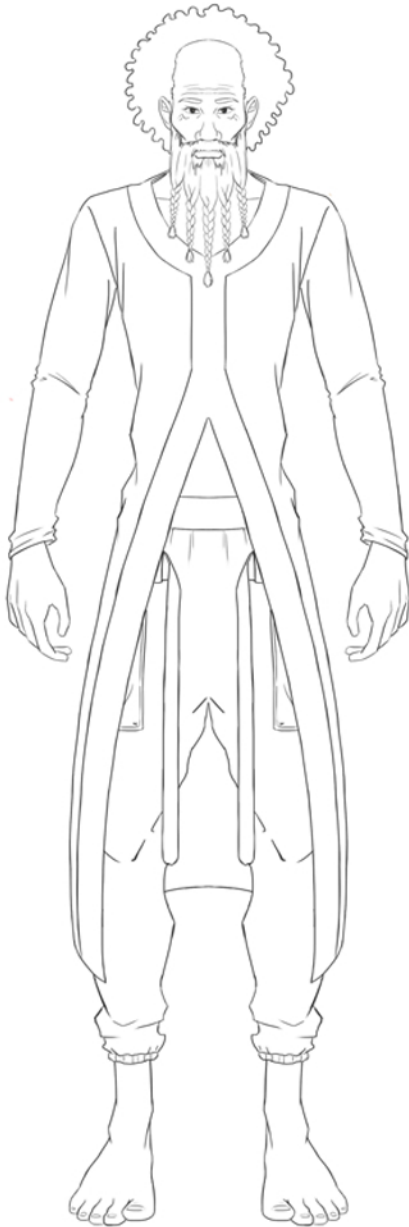
# 5

**NOW IT'S TIME TO DRAW THE FACE.  
DON'T FORGET TO ADD DETAILS TO  
THE EARS AND FINGERS.**



# 6

**NOW LET'S INK THE DRAWING WITH  
CONFIDENT LINES. DON'T FORGET TO  
ERASE ALL OF YOUR GUIDELINES.**



**NOW LET'S DO THE SAME FOR THE BACK VIEW.**

